

# EARLY ACCESS FINAL EXIT CODES

July 2019



This PowerPoint was created to give a brief overview for Early ACCESS service coordinators and providers on final exit codes that are used when a child and their family exits Early ACCESS.

## Purpose of Presentation

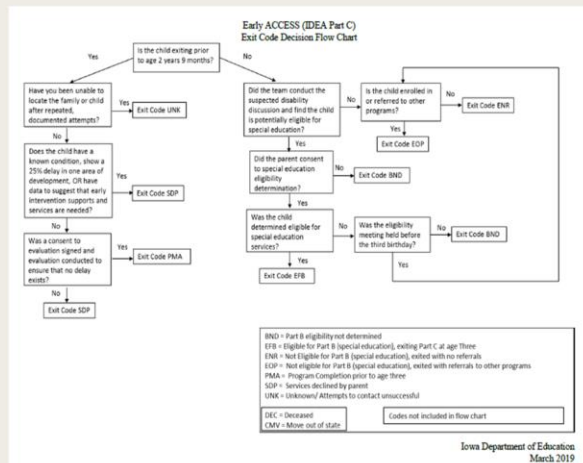
- Introduce the Exit Code Decision Flowchart.
- Highlight when a *Consent for Early ACCESS Evaluation and Assessment with Prior Written Notice* form is needed.
- Reference *Section 19: Final Exit* definitions and examples from the Early ACCESS Procedures Manual.

The purpose of this presentation is to:

- Introduce the Exit Code Decision Flowchart
- Highlight when a *Consent for Early ACCESS Evaluation and Assessment with Prior Written Notice* form is needed, and to
- Point Early ACCESS service coordinators and providers to resources where Final Exit code definitions and examples can be found.

## Final Exit Code Decision Flowchart

- Flowchart is a guiding document for *Section 19: Final Exit* and posted with the Early ACCESS Procedures Manual.
- Helps providers understand the appropriate final exit code to use when exiting a child from Early ACCESS.

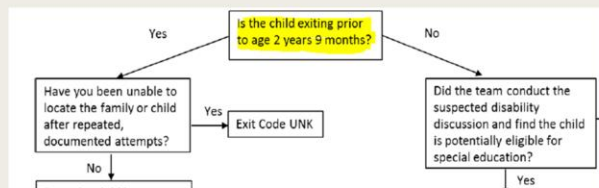
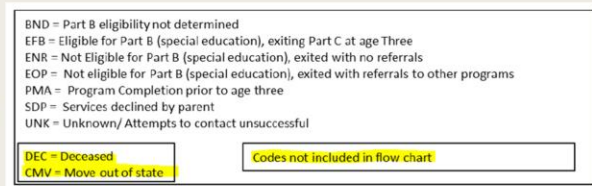


A Final Exit Code Decision Flowchart has been posted as a guiding document to *Section 19: Final Exit* of the Early ACCESS Procedures Manual. The Manual and its guiding documents can be found online at Iowa Family Support Network. A link to the location of *Section 19* and the flowchart will be provided on a later slide.

The flow chart is a tool to help service coordinators and providers understand what final exit codes to use when exiting a child from Early ACCESS.

## Final Exit Code Decision Flowchart: A Closer Look

- The deceased (DEC) and move out of state (CMV) exit codes are not included in the flowchart.
- For all other codes, begin with the question, “Is the child exiting prior to age 2 years 9 months of age?”



Lets start by taking a closer look at the Final Exit Code Decision Flowchart.

In the bottom right hand corner there is a key that lists the final exit codes and a brief description of each code. This flowchart does not cover the deceased and move out of state exit codes. We felt that these codes are self explanatory and did not need to be included in the flow chart.

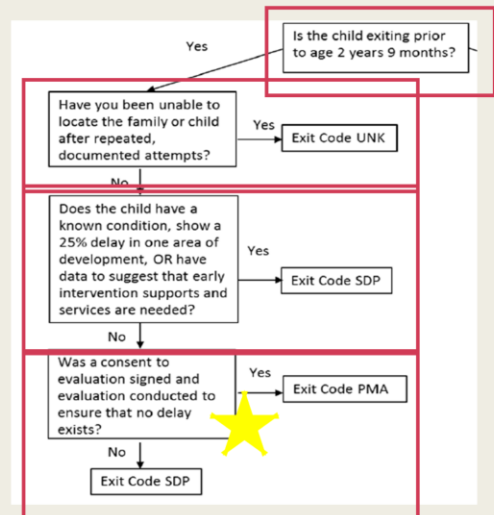
To navigate this flowchart, first begin with the question: Is the child exiting prior to age 2 years 9 months of age?

Depending on the age of the child, a transition plan may be required and specific exit codes may be used.

On the next few slides we will walk through the different exit codes that can be used based on child’s age at exit as well as other factors.

## Final Exit codes: exiting prior to age 2 years 9 months

- Exit codes that can be used when exiting prior to 2 years 9 months:
  - UNK
  - SDP
  - PMA
- A *Consent for Early ACCESS Evaluation and Assessment with Prior Written Notice* is needed and an evaluation must be conducted for exit code PMA.



(click) If a child is exiting prior to age 2 years 9 months the following codes can be used: unknown/attempts to contact unsuccessful (UNK), services declined by parent (SDP), and program completion prior to age three (PMA).

(click) If you have been unable to locate the family or child after repeated, documented attempts and the child will be exited from Early ACCESS, exit code UNK is used.

(click) If the parents are wanting to exit, even if the child remains eligible because they have a known condition, show a 25% delay in one area of development, or have data to suggest that early intervention supports and services are needed, exit code SDP is used.

(click) If the child does not: 1) have a known condition, 2) show a 25% delay in one area of development or 3) have data to suggest that early intervention supports and services are needed, exit code PMA is used.

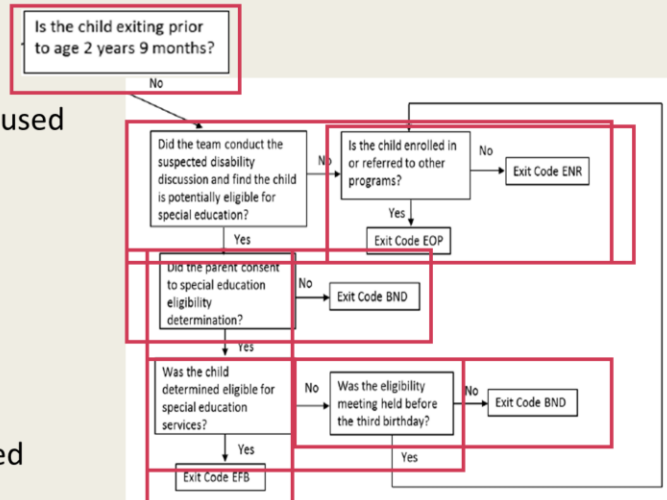
(click) In order to use exit code PMA, the team must ensure that the child does not have a 25% delay in any area of development prior to exiting. Teams will need to

obtain a *Consent for Early ACCESS Evaluation and Assessment with Prior Written Notice* and conduct an evaluation. Begin the evaluation in the area(s) of concern, and if no 25% in the area(s) of concern than evaluate all areas of development to ensure there is no delay.

If an evaluation was conducted and a 25% delay was found and the parent wants to end services or if the parent did not consent to the evaluation to confirm the child no longer has a 25% delay, PMA would not be an appropriate code to use. Instead the exit code to use is SDP.

## Final Exit codes: exiting at age 2 years 9 months or older

- Exit codes that can be used when exiting 2 years 9 months or older:
  - EOP
  - ENR
  - BND
  - EFB
- Transition plan required



(click) If a child is exiting at age 2 years 9 months or older, the following codes can be used: not eligible for Part B (early childhood special education), and exited with referrals to other programs (EOP); not eligible for Part B (early childhood special education), exited with no referrals (ENR); Part B eligibility not determined (BND); and eligible for Part B (early childhood special education), exiting at age three (EFB).

(click) If the team conducted the suspected disability discussion and does not think the child is potentially eligible for early childhood special education and child is enrolled in or referred to other programs, exit code EOP is used. If the child is not enrolled in or referred to other programs, exit code ENR is used.

(click) If the team conducted the suspected disability discussion and found the child is potentially eligible for early childhood special education, then the parent will need to consent to Part B eligibility determination. If the team suspects the child is potentially eligible but the parent does not consent to an evaluation, exit code BND is used.

(click) BND is also used when a parent has consented to an evaluation but an eligibility meeting is not held before the child's 3<sup>rd</sup> birthday and therefore eligibility

for early childhood special education services was not determined at exit.

(click) If the parent consented to Part B eligibility determination and the child is determined eligible for early childhood special education services, exit code EFB is used. If the child is determined eligible for early childhood special education, but parents decline Part B services, exit code EFB is used.

(click) If the parent consented to Part B eligibility determination and (click) child was found not eligible and the child is either enrolled in or referred to other programs, then use exit code EOP. If no referrals to other programs were made or the child is not enrolled in other programs ENR is used.

All children exiting Early ACCESS who are older than 2 years 9 months are required to have a transition plan completed.



## Further Information on Exit Codes

- **Section 19: Final Exit** definitions and examples from the Early ACCESS Procedures Manual and Final Exit Decision Flow Chart

- Iowa Family Support Network: <https://www.iafamilysupportnetwork.org/early-access-iowa/prof-prov/early-access-procedures-manual>

- **Part C Exiting Toolkit**

Bernstein, H., Gooden, C., Romero, L., and Walters, S. (2018, January). *Part C Exiting Toolkit*, (Version 1.0). IDEA Data Center. Rockville, MD Westat. Retrieved [data], from <https://ideadata.org/resources/resource/1750/part-c-exiting-toolkit>.

If you are interested in learning more about final exit codes and reading scenarios for the different codes, we recommend you read *Section 19: Final Exit* of the Early ACCESS Procedures Manual.

*Section 19: Final Exit* link on Iowa Family Support Network:

<https://www.iafamilysupportnetwork.org/early-access-iowa/prof-prov/early-access-procedures-manual>

The IDEA Data Center also has a Part C Exiting Toolkit. This tool kit provides information on Part C exiting reasons and explanations.

IDEA Data Center toolkit link: <https://ideadata.org/resources/resource/1750/part-c-exiting-toolkit>.

## Questions

- Contact the Early ACCESS Liaison.
- Submit a question online through “Early ACCESS Procedures Questions” located on the Iowa Family Support Network (IFSN) website.

– *Link to questions and answers on IFSN:*

<https://www.iafamilysupportnetwork.org/early-access-iowa/prof-prov/answers>

Iowa Department of Education

Early ACCESS State Coordinator Cindy.Weigel@iowa.gov

If you have questions regarding Final Exit codes, contact the Early ACCESS Regional Liaison within your Area Education Agency or the Child Health Specialty Clinics Early ACCESS Program Manager.

If you have other questions related to Section 19: Final Exit or questions on any other section of the Early ACCESS Procedures Manual, submit a question online through “Early ACCESS Procedures Question” located on Iowa Family Support Network.